


Probo

VETERINARY

MINDRAY ANIMAL VETUS 80 QUICK GUIDE



 probomedical.co.uk

 0333 004 7657

 **mindray**
animal care

Preparing a Patient

To get the best from your machine it is advisable to prepare the patient before the scan. We recommend carrying out this process outside the ultrasound room to reduce the chance of clipped hair entering the machine.

- 1) Clip as needed and clean the skin with a mild soap to degrease the skin before applying gel. It can take few minutes for the gel to soak in before you achieve the best image. Degreasing may not be required for all patients.
- 2) When ready to scan, apply more gel to the probe, and patient if necessary.
Warm gel is absorbed faster.
- 3) If using alcohol, for example when performing a FAST scan or sampling, it is recommended to cover the probe. Use a glove or specific transducer cover with gel inside then apply alcohol to the patient.

Performing an Exam

Before turning the system on, ensure the probes are connected and locked in place, the power cable is inserted, and the socket switched on at the wall.

- 1) Press Power button at the top left of the console to turn the system on.
- 2) Press Info button on the left of the touchscreen to enter patient details. Make sure to select the correct species, using the mouse cursor or touchscreen to click Done. A physical keyboard is found under the console and can be extended by pushing in before releasing.
- 3) Press Probe button on the left of the touchscreen to bring up presets on the touchscreen for the current probe, or tap the probe you wish to use on the touchscreen and select the relevant preset. You are now ready to begin your scan.
- 4) Please see below console diagrams to find image optimisation controls, measurements, and save buttons for still images and cine loops.
- 5) Once you have completed the exam, press the End Exam button on the lower left of the touchscreen.

Reviewing Exams

- 1)** To access previous exams for review or export, select iStation from the Patient screen or on the keyboard.
- 2)** Double click on a patient to open the exam for review.
- 3)** You will see a thumbnail overview of the images of the exam. Double click on any to reopen the exam.
- 4)** You can navigate through the images by selecting the thumbnails at the side of the screen or the up and down arrows on the keyboard.

Exporting Images via USB

- 1)** Insert the USB device into one of the ports on the console arm, you may need to remove a plastic cover.
- 2)** To access previous exams for export, select iStation from the Patient screen or on the keyboard.
- 3)** Single click to highlight the exam for export.
- 4)** Choose Send Exam from the drop down menu or the side of the screen to export.
- 5)** You will be given the option to choose the send location e.g. a USB memory stick, the image format and whether or not to export a report.
- 6)** Click OK to send the exam.
- 7)** If transferring files to a USB device, make sure to safely eject it by clicking the USB icon at the bottom of the main screen before removing it from the port.

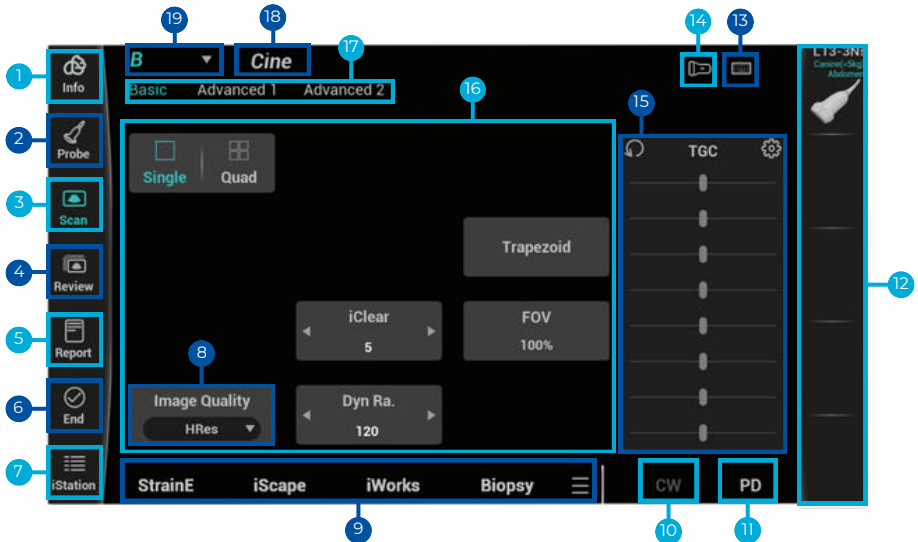
Console Overview



- 1) Power button** - Press to turn machine on. While powered on, press for power options including shut down.
- 2) User Programmable Button** - Commonly set as iStation or continuous wave Doppler.
- 3) PW** - Pulsed Wave Doppler. Press once to activate sample volume, use track ball to position and press again to enter pulsed wave Doppler. Rotate to change PW gain.
- 4) C** - Colour Doppler. Press to activate Colour Doppler window. Rotate to change colour or power Doppler gain.
- 5) Dual screen** - Press to activate, press again to change active side, press B dial to exit.
- 6) iHelper** - Press to activate and then choose mode from touch screen.
- 7) Angle** - Rotate for angle correction or to change arrow annotation orientation.

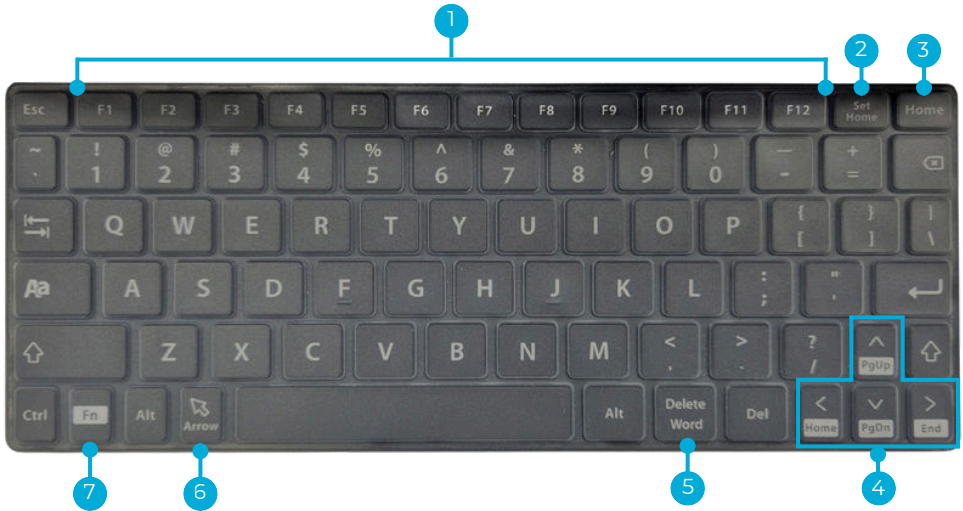
- 8) M** – M Mode. Press once to activate M mode cursor, use trackball to adjust position and press again to enter M mode. Rotate main gain dial to change M mode gain.
- 9) Update** – Switch live mode e.g. toggle between live spectral doppler and live B mode.
- 10) B** – B Mode. Rotate to change overall gain (brightness) of the image. Press to return to B mode from any other mode.
- 11) Depth/Zoom** – Rotate to change depth. Press then rotate to zoom, press again to exit zoom.
- 12) Body mark** – Press to activate body mark mode. Not typically used in the UK.
- 13) ABC (comment)** – Press to activate comment mode. Select from touch screen or main screen. You may also type on the keyboard without pressing this button to add custom annotations.
- 14) Measure** – Labelled measurement and calculation packages. Select from touch screen or main screen.
- 15) Caliper** – Generic measurement tools with two point caliper as default. Select other options from touch screen or main screen.
- 16) iTouch+** - Press to optimise the current image, press again to reoptimise. Double press or long press to deactivate.
- 17) P1** – User defined key. Typically set as a retrospective cine loop.
- 18) Clear** – Single press to remove comments, annotations and measurements in reverse chronological order. Long press to clear all.
- 19) Cursor** – Show/hide mouse cursor.
- 20) Confirm key** – Mouse click, may change function depending on active mode. See bottom of main screen for current function if different.
- 21) Confirm key** – Mouse click, may change function depending on active mode. See bottom of main screen for current function if different.
- 22) Freeze** – Press to freeze/unfreeze the image. Use trackball to scroll through frame buffer while frozen.
- 23) Save** – Save still image in configured way. Default is a still image.
- 24) Trackball** – Used to control cursors and region of interest position and size.
- 25) Physical keyboard** – Press in under the console to release physical keyboard.

Touchscreen Overview



- 1) **Info** - Animal info screen to enter patient details. Ensure you select the correct species as this will determine the presets you can choose.
- 2) **Probe** - Change probe and/or preset.
- 3) **Scan** - B mode imaging screen.
- 4) **Review** - Review stored images.
- 5) **Report** - Report editor.
- 6) **End** - End current exam.
- 7) **iStation** - Database of all past exams.
- 8) **Image quality** - Frequency control drop down menu. Pen = Low, Gen = Mid, Res = High and if there is a H prefix it indicates harmonic mode is on.
- 9) **Additional application modes** - Displays available modes.
- 10) **CW** - Continuous wave doppler (phased array probes only). Use PW to change gain.
- 11) **PD** - Power doppler.
- 12) **Recent probes and exam modes** - Quickly switch back to previous setting.
- 13) Touchscreen keyboard.
- 14) **iLight** - Provides downward facing light.
- 15) **TGC** - Time gain compensation controls. Change the gain at different levels.
- 16) **Imaging controls**
- 17) **Basic and advanced image control tabs**
- 18) **Cine** - Cineloop settings.
- 19) **Image control mode selection**

Keyboard Overview



1) User defined F keys

2)Set home – Set default/home position for comments cursor.

3) Home – Move comments cursor to home position.

4) Arrow keys – Up and down arrow keys can be used to move through saved images once opened.

5) Delete word – Delete last word.

6) Arrow annotation – Use angle dial to change direction.

7) Fn – Function, press and hold while pressing any button with alternative function.

**In need of a service for your
Vetus 80 system?**

**Or need to get in touch with
us about a fault?**

Our knowledgeable and friendly
ultrasound servicing experts are happy to
help...



ultrasound.service@probomedical.co.uk



www.probomedical.co.uk



0333 004 7657

Probo
VETERINARY

