

Vetus 8

Veterinary Diagnostic ultrasound System

Excellent performance for your trust



LinkedIn Facebook Instagram

Search Mindray Animal Medical

www.mindrayanimal.com
service@mindrayanimal.com

P/N:ENG-Vetus 8-210285X8P-20221018
©2022 Shenzhen Mindray Animal Medical Technology Co., LTD. All rights reserved.





Vetus 8

Mindray Vetus Series offer professional veterinary solutions catering to a wide variety of species ranging from small pets to large farm animals.

Vetus 8, the premium veterinary ultrasound imaging system, adopts the most cutting-edge ultrasound technology to provide clear and precise image according to different animal species.

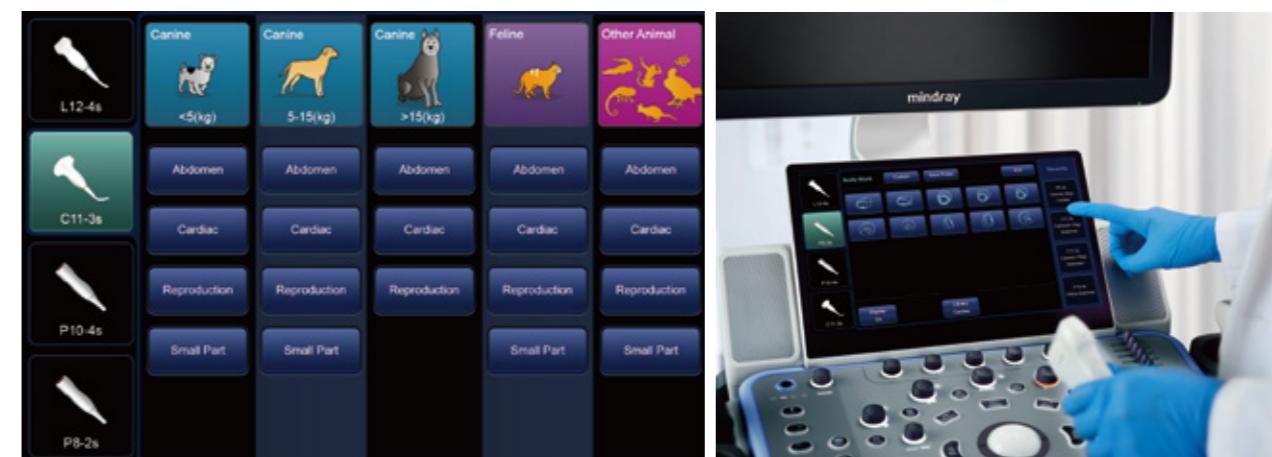
Moreover, packaged with the simple workflow, dedicated design and complete veterinary solution make it the ideal ultrasound system for your everyday practice.

Clear & Precise Images

- Professional veterinary image presets according to different animals' body characteristics
- Animal species are subdivided to different categories by weight and body size for precise diagnosis
- 23.8 inch High Definition monitor provides clear tissue details

Simple & Smart Workflow

- Transducers and the corresponding exam modes are displayed in the same interface, select or switch within 1 second
- Recent 4 modes are presented on screen, one-key to switch the frequently-used exam mode
- 13.3 inch touch screen supports powerful multi-touch gesture operation

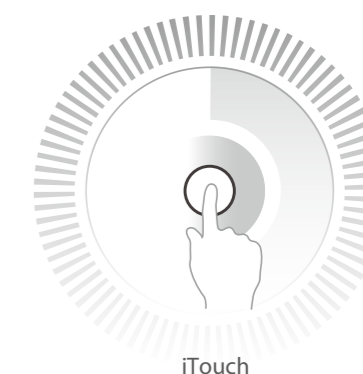


Powerful Intelligent Tools

- Auto Volume Control System helps to avoid frightening the pet animals
- Auto measure tools: Auto PW, Auto EF maximize the productivity for easy-accurate-scanning
- Automated workflow guide iWorks standardize and simplify the Abdomen/Cardiology workflow, allowing more focus on the animal diagnosis

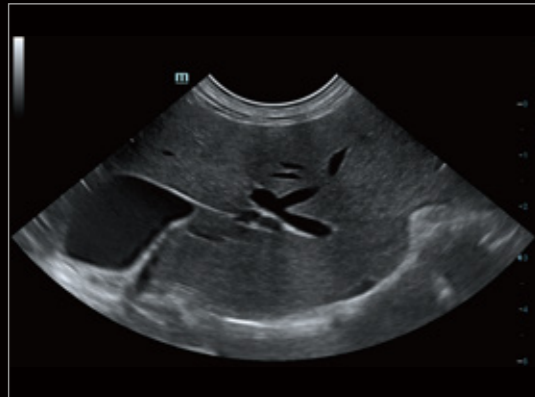
iTouch

iTouch is a one-button auto image optimization solution, which is able to optimize the imaging quality automatically in B/PW mode.

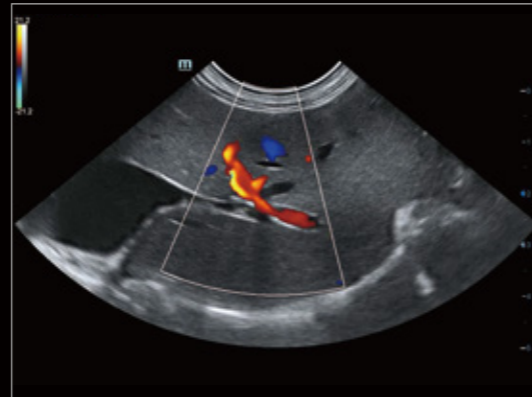


iTouch

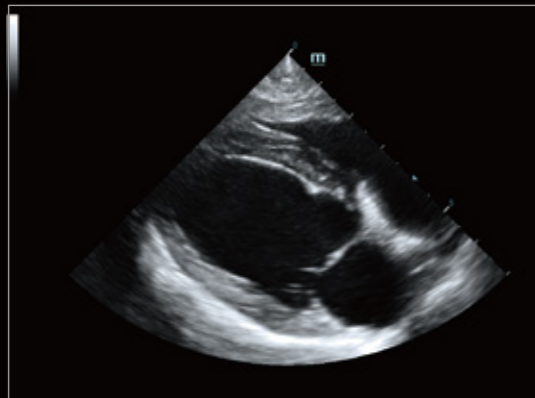
Ergonomics dedicated for veterinary practice



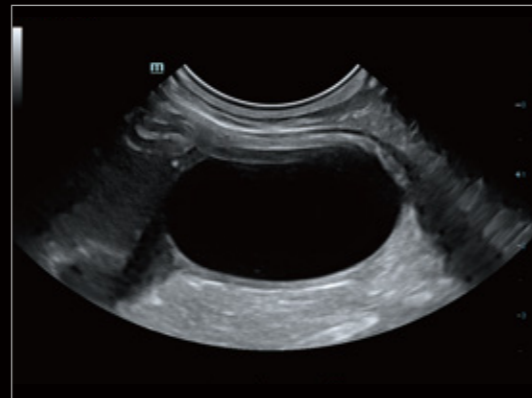
Feline Liver



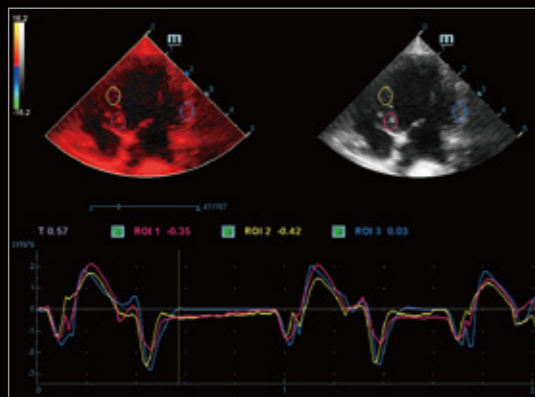
Feline Hepatic Flow



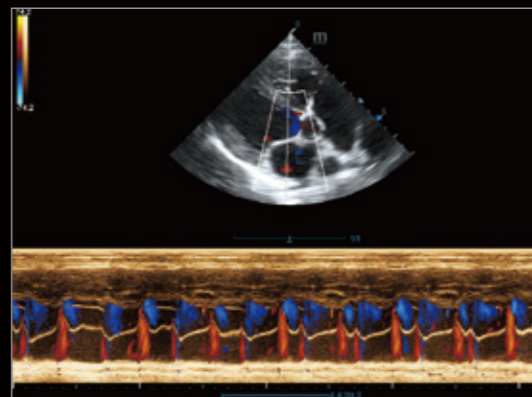
Long Axis View of Canine Heart



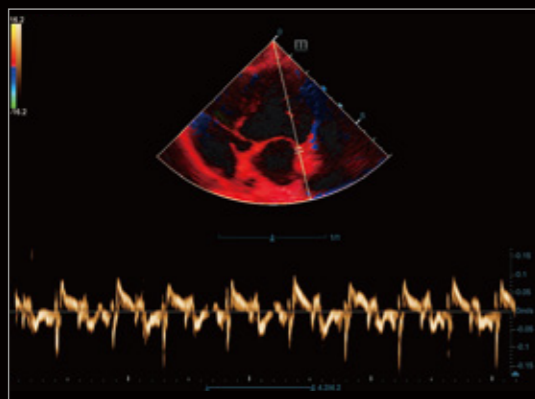
Feline Bladder



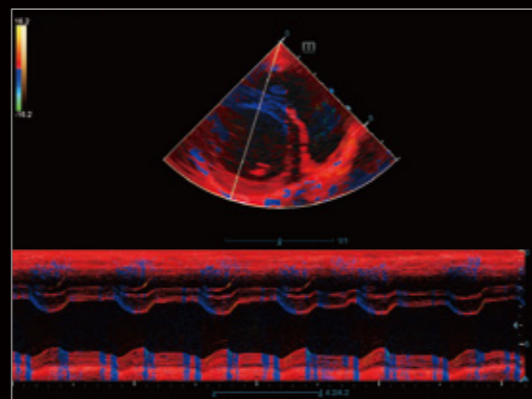
TDI QA of Canine Heart



Color M Mode of Canine Heart



TVD of Canine Heart



TVM of Canine Heart

23.8" High Definition Monitor
180-degree rotation



Dual-Wing Floating Arm
Move anywhere you want



13.3" anti-glare touch screen
30-degree rotation, multi gesture



Sliding keyboard with
designed silicon cover



Anti-dirty control panel
Rotatable & height adjustable

5 active smart transducer sockets*

High capacity battery for standby mode[☆]
Keep the image data always safe

Designed for cable management
Help keep cables off the ground

Stable wheels with small footprint
Anti hair-wrapped, 360° rotation

*4 sockets is standard configuration, 5 sockets is purchasable optional.

☆Battery is optional configuration

Small Animal Solution

Feline, small-sized canine and exotic small animals

Abdomen & Reproduction



C11-3s

Micro convex array transducer

- **Dedicated design:** Streamlined and smart size for small animal abdomen
- **One probe solution:** Support both abdominal and basic heart ultrasound
- **Excellent performance:** High penetration with wide field of view (Extended FOV: 140°)

Superficial & Musculoskeletal



L12-4s

High frequency linear array transducer

- **iNeedle:** Biopsy needle enhancement and guidance
- **iScape View:** Real-time Panoramic Imaging to extend the field of view
- **HR Flow:** High resolution flow to provide more details of animal tissue
- **Elastography imaging:** Displaying the tissue stiffness for precise evaluation

Cardiology



P8-2s

Mid/high-frequency phased array for mid and small-sized species



P10-4s

High-frequency phased array for small-sized species

- **Free Xros M-Anatomical M mode:** up to 3 sample lines
- **TDI-Tissue Doppler Imaging** with complete 4 modes (TVI/TVD/TVM/TEI): wall motion analysis for myocardial function
- **TDI QA-Tissue Doppler Imaging with Quantitative Analysis:** analysis of myocardium motion with strain/strain rate
- **Auto EF:** Automatic animal heart Ejection Fraction computation
- **Stress echo:** Evaluate segmental myocardium movement with increased workload
- **TTQA-Tissue Tracking with Quantitative Analysis:** track myocardial contraction by detection of the 2D speckle patterns, provide LV regional movement abnormalities diagnostic

**More transducers can be supported, please contact your local sales representative for further details.*

Large Animal Solution

Big-sized canine, equine, bovine, ovine and exotic big animals

Reproduction



6LE5Vs

Intrarectal linear array transducer for equine and farm animal reproduction exam

- 3-meter cable tailed for large animal scanning scenario
- Anti-liquid, anti-dirty and easy-clean design
- High resolution with wide field of view designed for IVF

Abdomen



C6-2s

Convex array transducer for abdominal and reproduction scanning in big animals

- **iNeedle:** Needle enhancement and guidance for biopsy
- **iScape View:** Real-time Panoramic Imaging to extend the field of view

Cardiology



P4-2s

Low-frequency phased array transducer for medium-sized & large species

- **Free Xros M-Anatomical M mode:** up to 3 sample lines
- **Free Xros CM-Curved Anatomical M mode:** the sample line manually depicted anywhere on the image
- **TDI-Tissue Doppler Imaging** with complete 4 modes (TVI/TVD/TVM/TEI): wall motion analysis for myocardial function

**More transducers can be supported, please contact your local sales representative for further details.*